



CREATING



**SUSTAINABLE
FUTURE**



ABOUT US

Escape Bangladesh Limited has been involved in providing Construction, Oil & Gas and power sector project support services in Bangladesh. We provide engineering procurement construction (EPC) and a complete local logistics support service for international; turnkey projects secured by International/Multinational companies and local government project. We move with Multinational Company as joint Venture Local agent or service provider. We have vast experience in these sectors have good market reputation in an area where there are very few professionals. Escape Bangladesh Limited (EBDL) has emerged through vast experience, as the country's leading logistics management Company. Our professional approach for project management has been welcomed and appreciated by our clients.

The Main businesses of EBDL focus in power oil & gas sector, project contracting and services. Its service covers a wide range of key sectors including Procurement and Logistics. Shipping solution, Clearing and forwarding works, Project Equipment Supply, On short term basis equipment import-export. Port to site transportation, Onsite Support, Civil construction Works, Site preparation including leveling work etc. Escape Bangladesh Ltd. Is one of the leading business houses in Bangladesh engaged in project support and construction works. We have built-up a core team of professionals in-house who have diversified technical backgrounds knowledge and practical experience to provide the depth of expertise in various disciplines to assist in the planning, development and implementation of national and localized projects. Most of our Engineers have long working experience in different Government and semi-government organizations and have hands-on experience in execution of many large projects in the public sector.

Escape Bangladesh Limited offers a full range of support services in offshore oil and gas surveys, specialized and general civil construction and customs brokerage. Over the years we have prioritized establishing long-term relationship with all our partners for sustainable growth. Our long-standing relationships with the National Board of Revenue (NBR). The Board of Investment (BOI), Chief Controller of Import and Export, Customs, Department of Passport and Immigration Department and Bangladesh Central Bank –allows us to offer a complete service package to our clients, right down to handling visa extensions and renewing work permits. We also offer international courier services and travel planning services, via our sister subsidiary companies.

We Escape Bangladesh Ltd also have been doing Agro Base trading business from 2011 in Bangladesh as increasing public demand we are trying to provide quality commodity products to our customers. We are closely working with the Public and Private sectors.

MISSION

To provide end to end solution in any project.

To provide specialized skilled services in operation & maintenance with outstanding performance in Oil & Gas sector.

To ensure improved and satisfactory services to the Clients.

To benefit our customer in any environment.

To safely deliver any project equipment, logistics and other services in time.

VISION

Escape Bangladesh Ltd's vision is to provide quality and reliable services to the client and for desired economic, social and human development of the country undertaking institutional and structural reforms leading to the creation of an organization of international standard. To be the world's

Contractor and Employer of Choice by safely and consistently delivering heavy equipment, logistics and other services anywhere in the world.

OBJECTIVES

The company's objectives is to achieve growth by developing one all round activities under one umbrella to build up a brand image. We believe that we can make meaningful operating results through proper strategic market positioning, competitive physical facilities and appropriate franchise.

MESSAGE FROM CHAIRMAN

We believe that the primary responsibility of a company is to create value. We are currently focused on engineering and procurement. Our team's out righted commitment to contracts and clients over the past 11 years is the reason behind our success. Our work has a direct impact on the national development of our country which is a matter of pride for us. We have been providing our team with training and workshops in order to improve and to bring out the best output.

Our diverse portfolio encompasses power plant engineering, Procurement & construction (EPC), Large distribution and transmission network, Operations & Maintenance , Service of plant & equipment, energy audit and technology evaluation & technical services related to medium & large power plants, complete solution in water treatment systems, chemicals for plant & industrial applications and facilities management.

Throughout the history of Escape Bangladesh Ltd, we have worked through strategic marketing and cultural relations with other countries in order to build trust and affiliation with them. Armed with its vast array of trading information and resources, the people of this group are creative and flexible. We adapt to gradually changing market conditions while moving ahead steadily for a successful business.

Escape Bangladesh Ltd aspires to set examples and become to a leading company in Bangladesh.

We hope that through this Profile, we can stimulate your interest in doing business with us. The success of Escape Bangladesh Ltd is linked to the success of our clients and it will always be our earnest Endeavour to serve them. We look forward in serving you to fulfill your business expectations.

MESSAGE FROM MANAGING DIRECTOR

Since 2009 Escape Bangladesh Limited has started the journey in the field of construction mega projects by providing construction related equipment. In the meantime, we are trying to engage ourselves in civil engineering construction projects as a prime contractor, as well as we are involved as EPC contractor. Hence this is the beginning of our journey in government, semi government and autonomous (public, private) sector. We are also experienced with working as a sub-contractor under Bangladesh Army and Bangladesh navy authority. Escape Bangladesh Limited is merged with foreign investor and multinational company in various construction mega projects. In government sector we are well known as first class contractor at LGED, EED, CDA, Civil Aviation Authority, BCIC, BIWTA.

Our aim is to provide quality clients and for desired economic, social and human undertaking institutional and structural reforms organization of international standard. 'To be the of Choice by safely and consistently delivering heavy services anywhere in Bangladesh.

MESSAGE FROM DIRECTOR

To begin with, I would like to express my heartfelt gratitude to our esteemed clientele, financiers, bankers and also to record my sincere appreciation for the employees who work diligently and deliver the projects to everyone's delight. I would like to thank you all for visiting our profile and learning about our Victorious Voyage in the business.

Escape Bangladesh Limited is not just an organization but a process, by which dreams became realities and experienced visions became dynamic achievements. We are the winner of BID World Quality Commitment Award in Paris 2014. We have established a leadership position in the Engineering Procurement and Construction Company with a strong presence across the entire utility value chain. We have re-invented ourselves and widened our business canvas by fully leveraging our core competence in building and managing world-class infrastructure assets. In the engineering procurement and Construction, we are involved in transmission, distribution and trading of electricity and constructing power plants as engineering, procurement and construction contractor. In the infrastructure space, the company is focused on roads, metro rail and airports and also as import and supply of equipment.

We are optimistic to attain remarkable growth and to contribute significantly to the development of Bangladesh. The Company would accomplish the prominence as the leader in the field of construction and engineering through competence, competitiveness, and timely delivery with the highest quality standard and recognized safety performance.

Our aim is to provide quality clients and for desired economic, social and human undertaking institutional and structural reforms organization of international standard. 'To be the of Choice by safely and consistently delivering heavy services anywhere in Bangladesh.

In brief, drawing strength from reforming, Escape Bangladesh Ltd will maintain its mentality of offering reliable services in the future as in the past.

PERSONNEL CAPABILITIES

Project Manager	20 Nos
Project Engineer	10 Nos
Material Engineer	20 Nos
Quantity Survey Engineer	5 Nos
Mechanical Engineer	20 Nos
Sub - Assistant Engineer (Civil)	20 Nos
Sub - Assistant Engineer (Mechanical)	20 Nos
Foreman & Supervisor	50 Nos
Total	165 Nos

TECHNICAL SUPPORT STAFF

Surveyor	17 Nos
Equipment Operator	105 Nos
Mechanics & Asst. Mechanics	85 Nos
Other Support Staff	152 Nos
Total	359 Nos

BUSINESS PERFORMANCE

Figure In million BDT

Particulars	2020-21	2019-20	2018-19
Service Revenue	371.34	269.71	281.75
Profit	91.92	74.31	73.07
Total Asset	333.97	312.17	235.63
Total Equity	273.05	277.41	203.09

SERVICES

EPC

Project Management

Dredging

Febrication

Logistic Support

Custom Clearing & Forwarding

Freight Forwarding

Transportation Service

Shipping Solution

Support to International Company

Equipment Rental

Equipment Trading



WORKING SECTORS

- Oil, Power & Gas
(On-shore and off-shore)
- Infrastructure Development
- Construction
- Railway
- Marine





ENGINEERING, PROCUREMENT & CONSTRUCTION (EPC)



Escape Bangladesh Ltd. is an Engineering Procurement Construction Company operating from Bangladesh, delivering high quality fast paced construction and real life support solutions across the globe. With a wealth of in-depth knowledge and expertise, our teams deliver a reliable and compliant service to every business process, which is internally audited to ensure company conformity. We have vast experience in complete project implementation in small project and in bigger project. We move with Multinational Company as consortium, merging, Joint venture, Local agent and service provider. As a leading international engineering contractor and service provider with established presence in the EPC industry, we offer a full spectrum of turnkey solutions to our governmental and corporate customers around the world, especially in developing countries.

Our excellent engineering & construction capabilities have been recognized both at home and abroad as a result of the successful completion and delivery of a number of projects which required advanced technical expertise and know-how. With a view towards becoming a world class engineering & construction company, we are making out utmost efforts to build sustainable growth which will take us into the future. Our first priority is earning our clients' trust and client satisfaction. We always endeavor to create satisfaction and value for our clients.

DREDGING SERVICE

Escape Bangladesh Limited (EBDL) is a dredging company focused on dredging works in Bangladesh and surrounding areas. The EBDL's brand name has been known worldwide for durable, capable, and versatile dredges. Reputed for successfully completing noteworthy projects, we pride ourselves in providing flexible, cost-effective and on-time solutions for our valued clients. Every time EBDL is committed and equipped to provide you with a satisfactory dredging services. We are one of the region's leaders, a position we maintain through our diverse range of ultramodern equipment and turnkey solutions.

Dredging is our signature talent, one that we have perfected continuously since our business was founded. We maintain our position in traditional dredging markets and in our home markets. Our fleet mainly operates within Bangladesh, however, our technical capabilities can be extended to any part of the Globe. Today our dredging operation capability in a highly sophisticated business with the help of the latest modern technology helps our customers not only meet their needs but to exceed their expectations.





LOGISTIC SUPPORT



EBDL provides full range of responsive, effective and reliable planning, procurement and supply chain management services; Our work with a leader in field of global logistical support worldwide. Our Logistics Management was mainly developed to handle projects involving large and heavy materials. We offer a full range of traditional Land Transport services and management programs to meet your needs. We have the full capability to move people, products and vital supplies from one side of the globe to the other through a variety of effective delivery methods. Our team of experts analyzes each shipment for an optimal supply chain process. Each project is a substantial operation that Escape Bangladesh Limited manages with particular care and caters to individually, in order to help you achieve the most suitable transport solution and support throughout the entire process. We offer a full range of traditional Land Transport services and management programs to meet your needs. Our team of export specialists can arrange land transportation on any destination in the world with a full range of documentation services. No matter what, if you are an importer, or a manufacturer seeking to export to foreign markets, we can assist you in your endeavor.

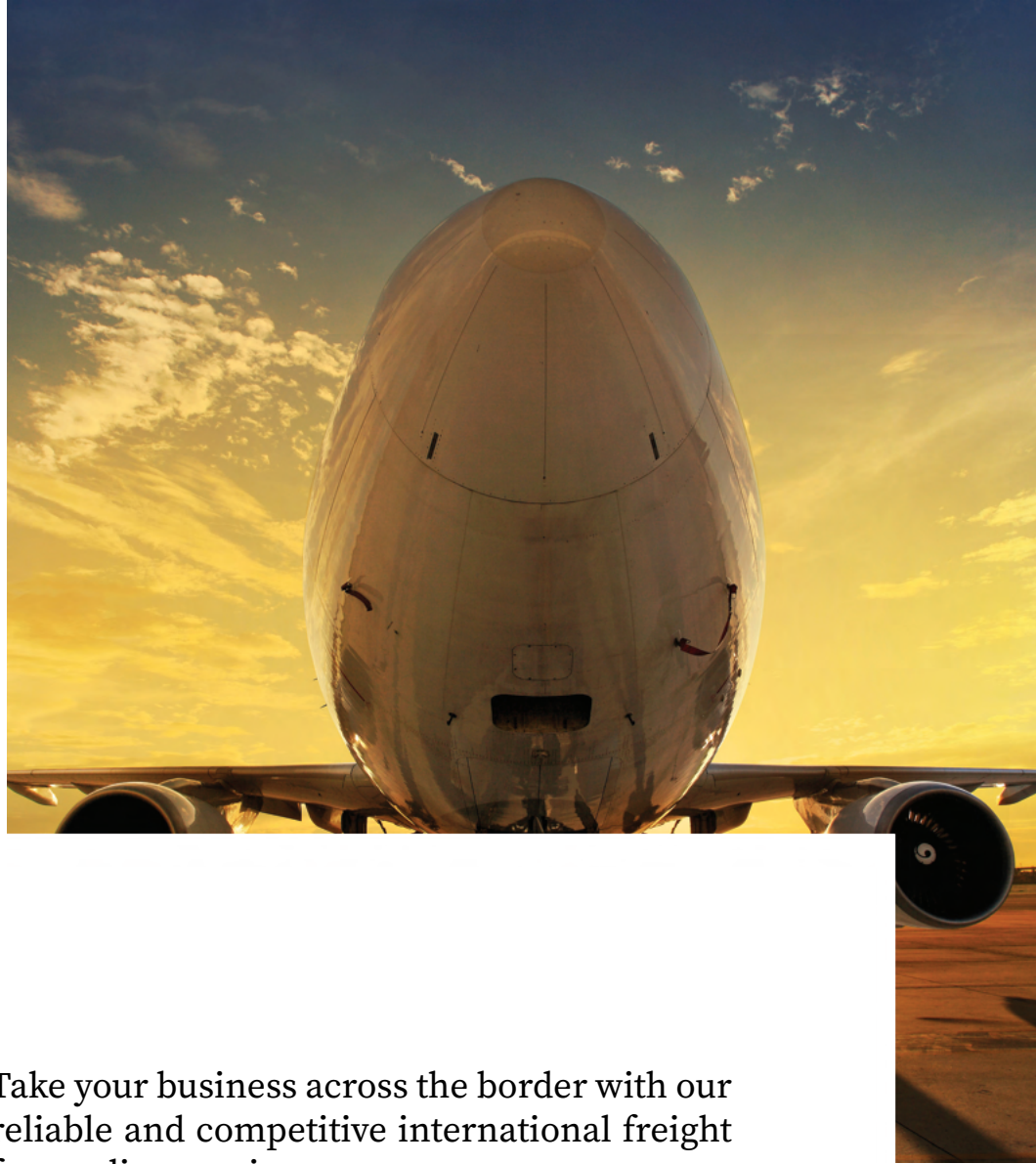


CUSTOM CLEARING & FORWARDING

This is highly mentionable that we have the experts at air, sea and land ports who are familiar with the formalities to do clearing and forwarding of shipments in a very smooth and prompt manner. We also have the necessary in-house management with oil field supervisors who are familiar with drilling rigs and also oilfield materials. They can identify any equipment at the ports that may need to be delivered on an emergency basis to the project sited. We give C&F support for Sea Port, Air Port and Land Port.

- Freight Forwarding
- Handling Special Equipment
- Consolidation for both Air & Ocean Freight
- Project Shipments
- Custom Clearance
- All Major Origins/
Destinations Covered





FREIGHT FORWARDING

Take your business across the border with our reliable and competitive international freight forwarding services.

As a leading global forwarder, Escape Bangladesh Ltd specializes in providing door to door freight transport both inbound to, and outbound from Bangladesh to any port of the world. Working in partnerships with the best in class carriers and partners, nothing is too big or too small for us to ship around the world for you.

Our standard freight services can be used individually; or be integrated with our warehousing and distribution solutions, and international and domestic express services for the ultimate convenience and consistency of a seamless and centralized one-stop solution. All our services are fully integrated with our leading-edge IT platform which allows for total visibility and traceability of your shipments.



TRANSPORTATION SERVICE



You are looking for a Transportation Company in Bangladesh? EBDL provides a wide range of responsive, effective and reliable transport solutions. It provides your carefree road transport all over Bangladesh. Our experienced staff will quickly and adequately look for the best solution for your transport demands. No matter how big or how small. We gladly take care of your complete or partial load. EBDL is specialized in transport but we also easily deal with your warehousing and customs formalities. With EBDL, you can be sure about your transport activities at highly competitive rates!



Our company has ever since been a leading transportation service provider. We have many years of experience when it comes to transportation, whether national or international. We transport your goods worldwide to where you need it. No virtually limits, we offer a comprehensive service that covers the entire transport chain in. We are happy to fulfill special wishes. Our customers can be assured that they receive their goods at the desired destination, fast, reliable and at reasonable cost.

SHIPPING SOLUTION

The ship agent is an independent shipping agent whose role often goes unnoticed, but who is of tremendous importance in maritime logistics. Also known as a shipping agent, the ship agent is an intermediary who acts on behalf of the ship owner. When a ship comes into port, it is taken under their wing by the ship agent, who conducts all of the procedures necessary to make the most of its time while moored in the port. Their diligent action translates into economic savings, since spending long periods idle in port can send the costs of the operation soaring sky high.



SUPPORT TO INTERNATIONAL COMPANY

Renowned foreign companies from different commercial sectors as well as national top tier companies can vouch for the professional and proficient services of Escape Bangladesh Ltd. We are the exclusive supplier for the government departments as well as numerous multinational companies. Beyond the helm of export and import. EBDL also offers administrative support and services to many ministries, the Bangladesh Bank, the Board of Investment, the National Board of Revenue and many other organizations.

The strong relationship we have cultivated with various government departments enable us to assist startup companies or new branch offices in obtaining all necessary permissions for transacting business,

- Board of Investment Permit
- Trade License
- Bangladesh Bank Permission (18 B)
- Tax Registration Certificate
- VAT Registration
- Import/Export Registration Certificate

- E Visa Recommendation from Board of Investment.
- Pursuing E Visa from Bangladesh Missions Overseas.
- Work Permit.
- vBangladesh Bank permission 18 A. Facilitating necessary investigations by the national Security Intelligence and Special Branch of Police.
- Home Ministry Security Clearance.
- Applying for long-term multiple entry visa from the Department of Immigration & Passport.
- Others Support.



EQUIPMENT RENTAL & TRADING

ESCAPE BANGLADESH LIMITED (EBDL) is the leading rental and trading company in Bangladesh of new, recondition & used Construction Equipment, Port Equipments, Railway Equipments, Marine Equipments, vehicles etc. in the region. EBDL is specialized in importing and distributing products for number of well-known industrial groups all over the world for service territories of Bangladesh. We are known as a reliable & powerful partner with full development potentiality.



EXPERIENCES

Project Name	Client Name:
Sylhet Bibyana Gas Field Project	Chevron Corporation, USA.
Kushira 155 MW Combined Cycle Power Plant	Max Infrastructure Limited, Bangladesh.
Payra 1320 MW Coal-fired Thermal Power Plant	NEPC Consortium Power Co. Ltd, China.
Matarbari 1200 MW Coal-fired Thermal Power Plant	Hyundai Engineering & Construction Co. Ltd, South Korea
Payra Sea Port Project	Jan De Nul Group, Belgium.
Rooppur Nuclear Power Plant	JSC Atomstroyexport, Russia.
Bashanchar Water Protection DAM Construction	Sinohydro Corporation, Japan.
Rampal 1320 MW Coal-Fired Thermal Power Plant	Keller Engineering Pvt. Ltd, United Kingdom.
New Haripur 412 MW Power Plant	Murubeni Corporation, Japan.
Rooppur Nuclear Power Plant	Trest Rosspetsenergmontazn Limited, Russia.
Kachpur, Megna, Gomoti Bridge Construction	Japan International Cooperation Agency (JICA), Japan.
Ghorasal Polash Urea Fertilizer Project	China National Chemical Engineering No.7 Co. Ltd, China
Re-excavation, Renovation and Development of Khals For Mitigation of water Logging of Chittagong City.	Chittagong Development Authority & Headquarters 34 Engineer Construction Brigade, Bangladesh.
Bhandal Jhury Water Supply Project	Gusan Construction Bengal Co. Ltd, Bangladesh.
Kafco Fertilizer Project	Toshiba Corporation, Japan.
Banshkhali 1320 MW S.S. Power Plant	Maoming Construction, China.
Rooppur Nuclear Power Plant	JSC Nikimt Atomstroy, Russia.
Banshkhali 1320 MW S.S. Power Plant	Shandong Electric Power Construction Corporation, China.
Moheshkhali FLNG Terminal Project	Geocean Enterepose, France.
Matarbari 1200 MW Coal-fired Thermal Power Plant	Posco Engineering & Construction Co. Ltd, South Korea.
Teknaf Rohingya Camp Project	Bangladesh Army, Bangladesh.
Moheshkhali LNG Terminal Project	Hengtai Global Offshore Engineering Co. Ltd, China.
Re-excavation, Renovation and Development at Noa Khals For Mitigation of water Logging of Chittagong City.	Chittagong Development Authority, Bangladesh.
Patuakhali 1320MW Coal Fired Thermal Power Plant Project & LONDA Ghat Road Construction.	TIANJIN ELECTRIC POWER CONSTRUCTION COMPANY, CHINA

WE HAVE BEEN WORKING EXPERIENCE WITH



WE TIE UP WITH



Tokyo Electric Power Services Co., Ltd.



TESTIMONIAL



Our work is construction flexible pavement road and Escape Bangladesh Limited is working with us. We are satisfied with their work. They are one of the leading company in Bangladesh as far as i know.

Mr. Mayinbao
Civil Engineer



Good afternoon.

We are working to build a nuclear power plant in the People's Republic. We have a great need to transport on construction site and beyond. Escape Bangladesh provides us with these services. And this company has proven to be a reliable supplier in the transportation sector. In general, we look forward to expanding our cooperation.

Mrs. Maria
Head of the Department (Mechanical)



TESTIMONIAL



“

I work in Bangladesh about the construction of a nuclear power plant. At the plant, the need to transport our personnel to the construction site. Escape Bangladesh Ltd completely covers our needs. At the same time, they have established themselves as a major reliable partner who can be trusted.

Mr. Andray
Transport Specialist



”

PROJECT REFERENCE



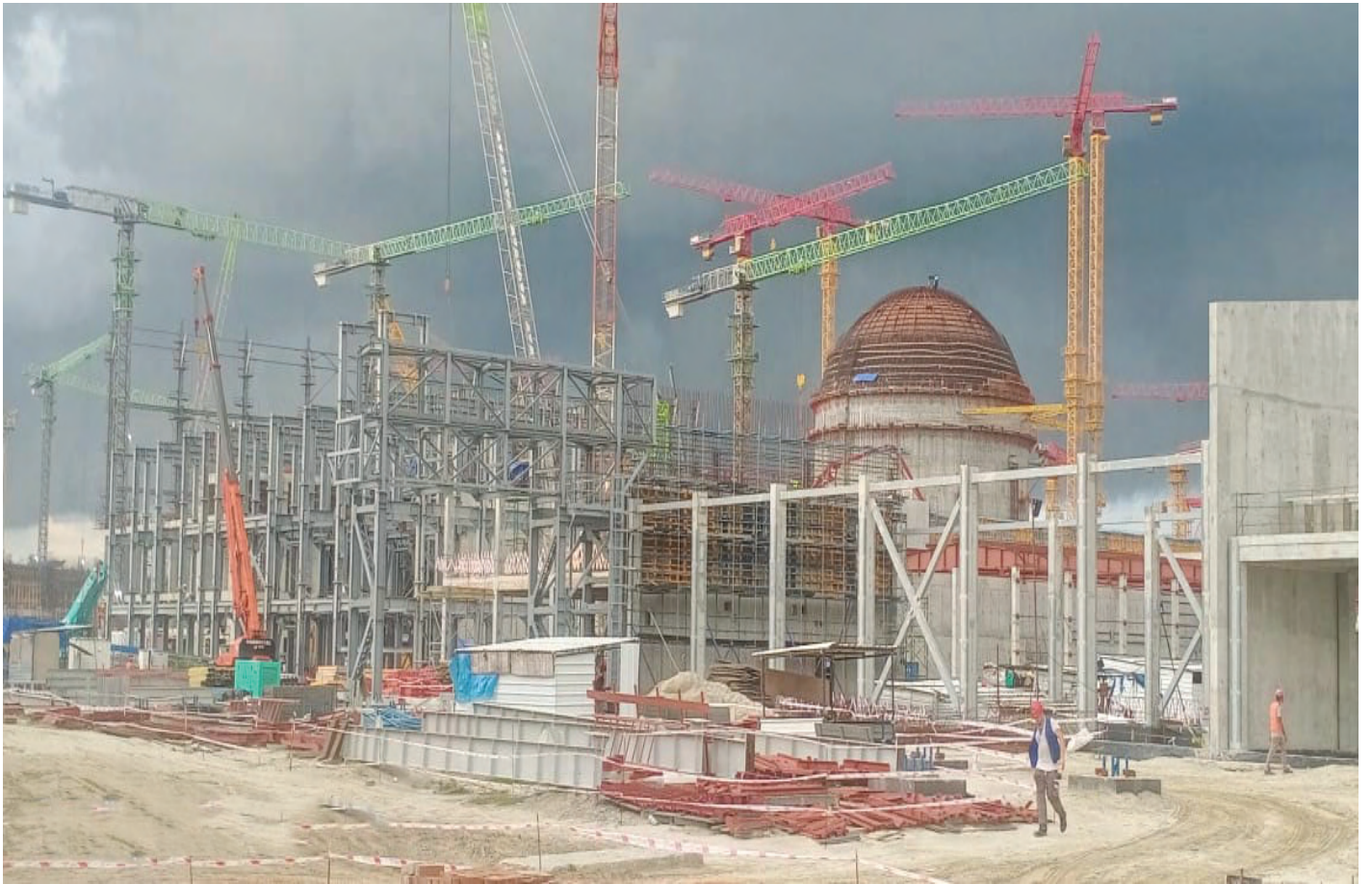
Moheshkhali LNG Terminal Project

PROJECTS



Kachpur, Megna, Gomoti Bridge

PROJECTS



Rooppur Nuclear Power Plant

PROJECTS



Patuakhali LONDA Ghat Road Construction Project

PROJECTS



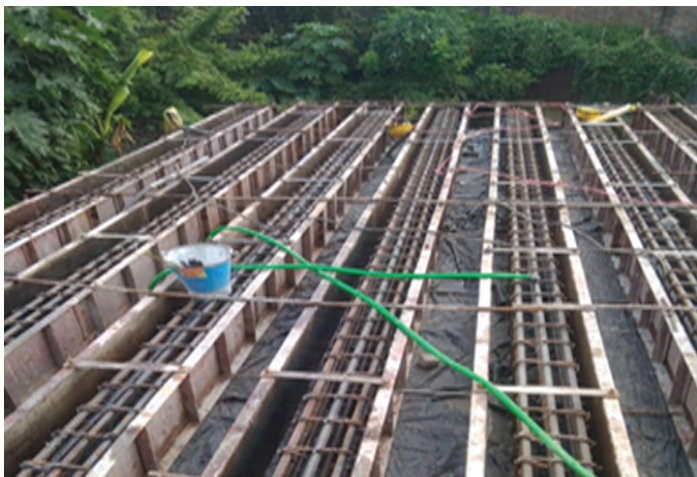
Kafco Fertilizer Project

PROJECTS



Bashkhali S.S. Power Plant

PROJECTS



CDA Waterlogging Project with 34 Engineering Construction Brigade in Chittagong

PROJECTS



Gorashal Construction Project

PROJECTS



Rampal Power Plant

PROJECTS



IGED Road Construction, Anowara.

PROJECTS



Ghorashal Polash Urea Fertilizer Project By CC7

PROJECTS



Bashanchar Water Protection DAM Construction

PROJECTS



Payra Sea Port Project

AWARD AND RECOGNITION





ESCAPE BANGLADESH LTD.
winner of the
**BID WORLD QUALITY COMMITMENT
AWARD ON PARIS 2014**



CONTACT

sales@escapebd.com, contact@escapebd.com

Corporate Office:

IEB Building, 4th Floor, Shahid Saifuddin Khaled Road,
Lalkhan Bazar, Chattogram - 4000, Bangladesh.

Tel: +88-0312556476,

Fax: +88031-2556225,

Mobile: +8801761492211 - 12

Dhaka Office:

House: 56 (1st Floor), Road: 13,
Sector 12, Uttara, Dhaka - 1230, Bangladesh

Tel: +88-02-9634008,

Mobile: +8801761492213 - 14.

THANK YOU

WWW.ESCAPEBD.COM